

Argus 4K Seacam Specifications

Part No: AR-0719-4KCCAM

Material	ADC6 Aluminium Alloy
Camera Type	Camera with Varifocal lens
Sensor Type	1/2.5" CMOS
Resolution	Approx. 8.51 Mega Pixels
HFOV °	Tele: 16.3 / Wide: 46.4°
IR Illumination	Yes
Video compression	H.264 / H.265
Power Supply	PoE
IP Rating	IP66
Working Temperature	-20°C (-4°F) to 60°C (140°F)
Dimensions Φ	Diameter 110 mm (4.3 in), Length 161 mm (6.3 in)
Weight (approx.)	1.5 kg (3.3 lb) (including mounting bracket)
Wiper	Optional
Heater	Optional
Defroster	Optional

Argus NVL Specifications

Part No: AR-0619-NVL

IP Video Input	Up to 32 channels
Video Output	HDMI
Compression	H.264 / H.265
Record Resolutions	4K, 5MP, 3MP, 1080p, UXGA, 720p, VGA, 4CIF, DCIF, 2CIF, CIF, QCIF
Record Mode	Continuous / Event / Motion / Alarm
Synchronous Playback	Up to 16 channels
Playback	4K, 5MP, 3MP, 1080p, UXGA, 720p, VGA, 4CIF, DCIF, 2CIF, CIF, QCIF
Network Interface	RJ-45 10 / 100 / 1000 Mbps
Internal HDD	Up to 4TB (x2)
USB Interface	USB 2.0 / 3.0
NMEA Interface	NMEA 0183, NMEA 2000
IP Rating	IP66
Power Consumption	<45 W
Operating Temperature	-10°C ~ +55°C (+14°F ~ +131°F)

Note:
1. Due to our policy of continual improvement, specifications may change without prior notice.
2. System must not be used in replacement of human observation.



Omnisense Systems USA Inc
2800 W State Rd 84 #113, Fort Lauderdale,
FL 33312, United States
T: +1 (954) 316-6230
E: enquiries@omnisense-systems.com
omnisense-systems.com



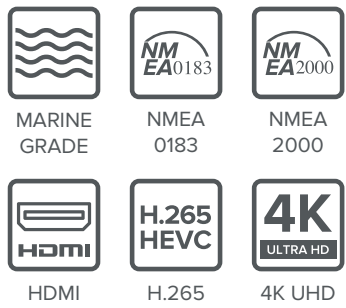
Argus | commercial

A robust CCTV solution for shipboard surveillance

The Argus system is an enhanced networked surveillance system specifically designed for maritime applications. Unlike industrial grade products, the Argus system offers many innovative features that will significantly enhance operational safety and security of any vessels.

At the heart of this networked system is the Argus NVL, a Network Video Logger. This network recorder not only process and record video images, it can be connected to navigation network of any modern vessel. Once connected, all relevant navigational data can be recorded along with video images. This will greatly enhance the usefulness of recorded video and provide a more meaningful post incident analysis.

Decisions can be made in a more efficient and timely manner. For example, if a Man-Overboard (MOB) incident is detected, reviewing the video footages taken by the Argus system will also show the exact time and GPS coordinates, saving precious Search and Rescue (SAR) response time. The NVL is highly customisable and feature build-in, shock mounted storage media for reliable, extended recording. With suitable datalink, both live and recorded video can be accessed remotely.

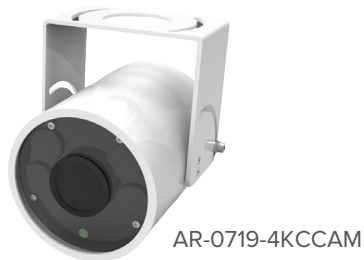


Argus 4K SEACAM

The Argus 4K Seacam can aid timely detection of possible safety issues and prevent any incidents. The 8 megapixels camera provides an improved view of the onboard working areas and the surrounding with ultra-high definition images.

Featuring a compact size and construction from corrosion resistant marine grade materials, the Argus 4K Seacam can be installed anywhere to give a real-time overview of deck conditions or operations unfolding.

To harness the true capabilities of the Argus system, connect the Argus 4K Seacam to the Argus NVL.



Forecastle mast

Monitor the area in front of the bow making it possible to observe smaller boats or other potential obstacles

Aft deck-view

Monitor crew working on deck, machinery and stowed equipment

Bridge wing-view

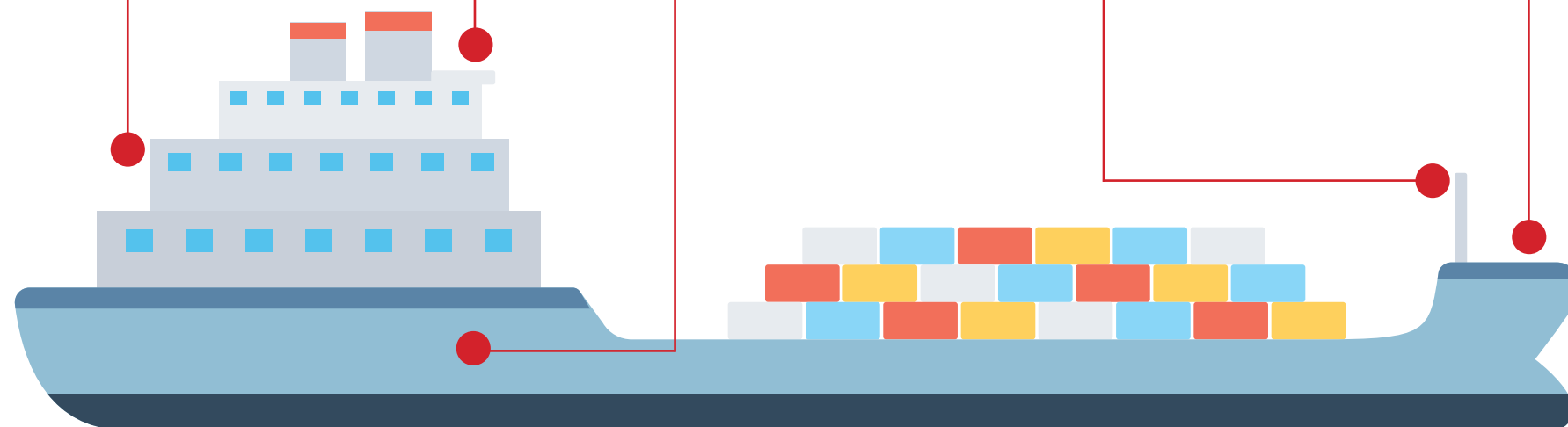
Monitor mooring of the vessel and gangway, aft-deck and eliminate blind spots alongside the ship

Engine room

Supplement manning, improve safety by detecting oil spills or smoke development even before the detection system gives a warning.

Winch-view

Monitor winch/anchor spooling operations and cables



Argus NVL

The Argus NVL is highly customizable and feature build-in, shock mounted storage media for reliable, extended recording. With suitable datalink, both live and recorded video can be accessed remotely.

Specifically designed for the marine environment, provides real-time logging of data from navigational electronics synchronized with ultra-high definition video images. This will greatly enhance the usefulness of recorded video and provide a more meaningful post incident analysis. The Argus NVL and cameras provides a robust solution for shipboard surveillance towards operational safety and against potential threats.

A Pioneering Marine Network Video Logger

Integrated with NMEA 0183 and NMEA 2000 for interface to other marine sensors and electronics.

Record More Than Images

Augment your surveillance footage with data from your GPS, autopilot, gyrocompass, sonar, echo sounder, anemometers etc

Enhancing Security Protecting Your Assets

Coupled with the Argus cameras, the Argus system provides robust 24/7 surveillance and data-keeping on crew well-being, movement topside and the ship's overall security and situational awareness.

- ▶ Marine grade construction, for use in adverse marine environment and weather conditions
- ▶ ADC6 aluminium alloy for high corrosion resistance
- ▶ High performance all the time: 4K UHD resolution (2160p) and up to 32 channels video/CCTV feeds
- ▶ Resilient operating system ensuring zero maintenance

In addition to Argus 4K Seacam cameras, the Argus NVL is also compatible with the Ulysses series cameras.

